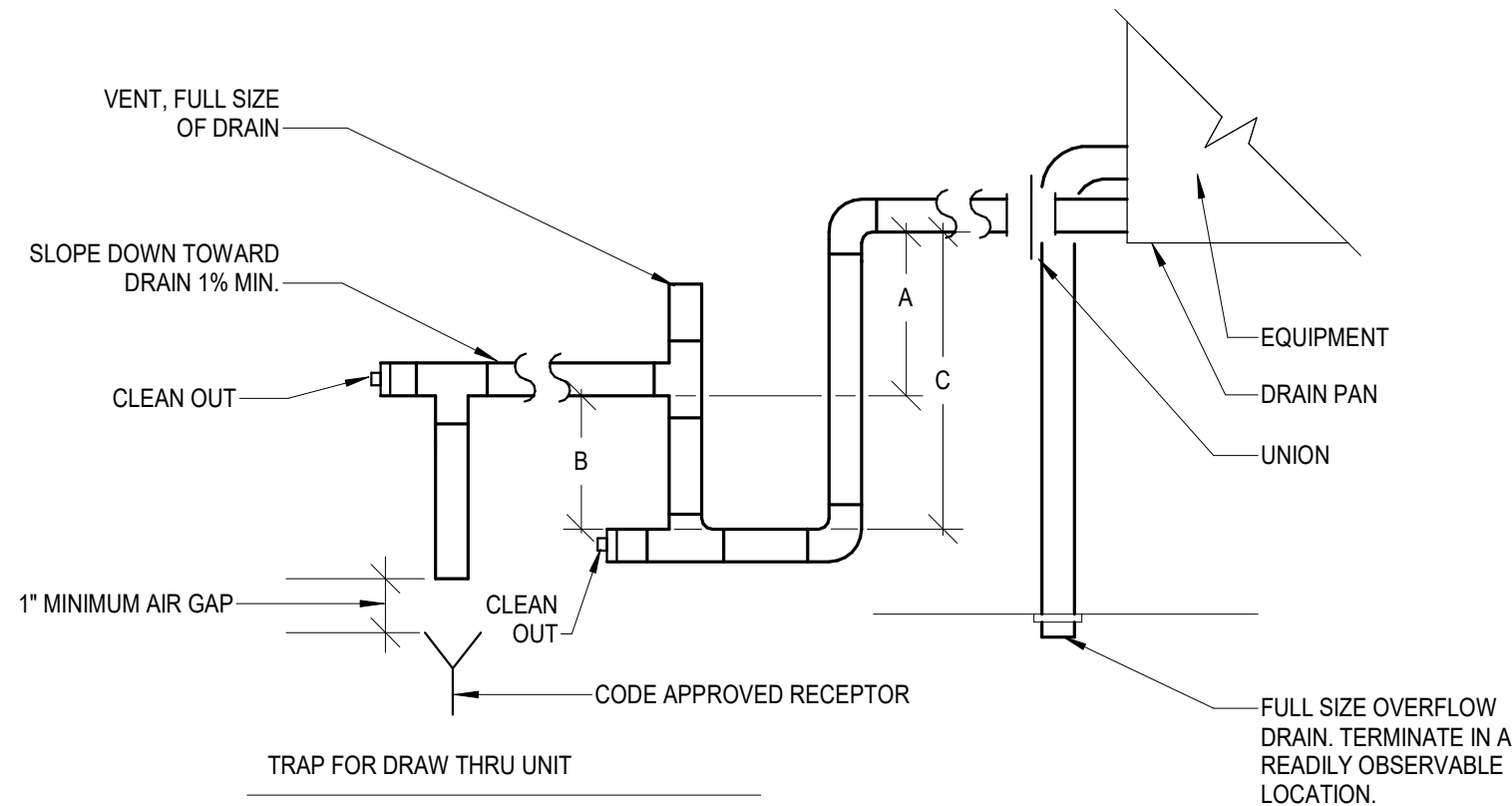


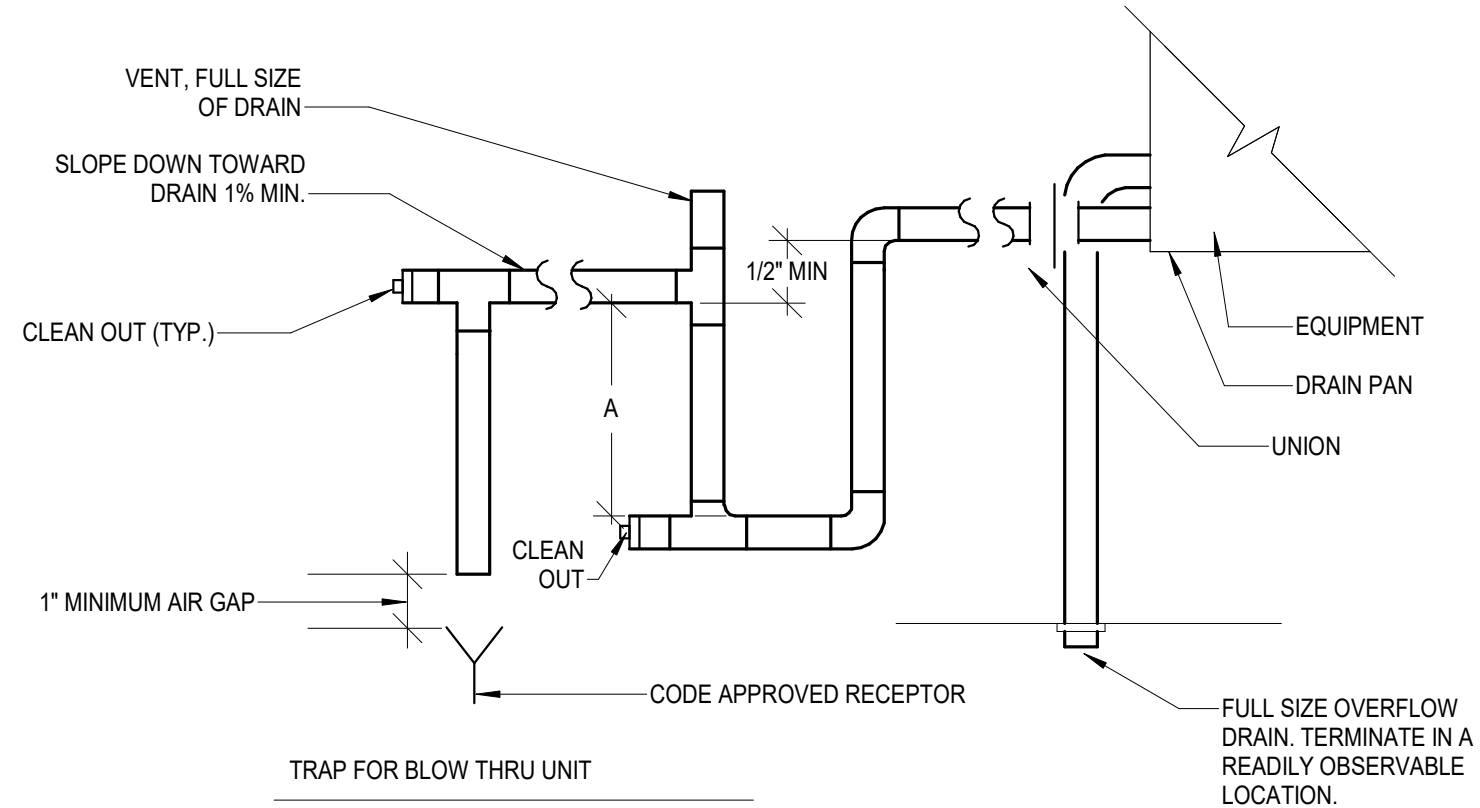
DRAIN LINE SIZES
UP TO 20 TONS = 3/4"
21 - 40 TONS = 1"
41 - 90 TONS = 1 1/4"
91 - 125 TONS = 1 1/2"
126 - 250 TONS = 2"

A = S.P. + 1"
B = A / 2
C = A + B



DRAIN LINE SIZES
UP TO 20 TONS = 3/4"
21 - 40 TONS = 1"
41 - 90 TONS = 1 1/4"
91 - 125 TONS = 1 1/2"
126 - 250 TONS = 2"

A = S.P. + 1/2"



1 TYPICAL CONDENSATE DRAIN DETAIL
NO SCALE

PLUMBING LEGEND AND ABBREVIATIONS

SYMBOL	ABBREV.	DESCRIPTION	ABBREV.	DESCRIPTION
	POC	POINT OF CONNECTION	ABV	ABOVE
	POD	POINT OF DISCONNECTION	A/C	ABOVE CEILING
	CD	CONDENSATE DRAIN	ADA	AMERICANS WITH DISABILITIES ACT
	SOV	SHUT OFF VALVE	A.F.F.	ABOVE FINISH FLOOR
	PRV	PRESSURE REDUCING VALVE	A.F.G.	ABOVE FINISH GRADE
	FS	FLOOR SINK	A/G	ABOVE GRADE
	FD	FLOOR DRAIN	A.P.	ACCESS PANEL
	FCO	FLOOR CLEAN-OUT	B/F	BELOW FLOOR
	WCO	WALL CLEAN-OUT	B.F.F.	BELOW FINISH FLOOR
	2WGCO	2 WAY GRADE CLEAN-OUT	B/G	BELOW GRADE
	DN	DOWN OR DROP	CFH	CUBIC FEET PER HOUR
	UP	RISE OR RISER	DWGS.	DRAWINGS
	HB	HOSE BIBB	EA.	EACH
		VALVE ON RISE OR DROP	EXIST.	EXISTING
	U	UNION	(E)	EXISTING
	RV	TEMPERATURE & PRESSURE RELIEF VALVE	FT.	FEET OR FOOT
	FDC	FIRE DEPARTMENT CONNECTION	FDC	FIRE DEPARTMENT CONNECTION
	CP	CIRCULATING PUMP	F	FIRE RISER
	CV	CHECK VALVE	FLR.	FLOOR
	TP	TRAP PRIMER	G.P.F.	GALLONS PER FLUSH
	WHA	WATER HAMMER ARRESTOR	G.P.H.	GALLONS PER HOUR
	REG	GAS REGULATOR W/SHUT-OFF VALVE	G.P.M.	GALLONS PER MINUTE
	RBP	REDUCED PRESSURE BACKFLOW PREVENTER	I.E.	INVERT ELEVATION
	GC	GAS COCK	KG	KILOGRAMS
	EQV	EARTHQUAKE VALVE	KPq	KILOPASCALS
			L.P.F.	LITERS PER FLUSH
			L/S	LITERS PER SECOND
			LBS	POUNDS
			MSA	MEDIUM PRESSURE GAS METER
			NTS	NOT TO SCALE
			ORD	OVERFLOW ROOF DRAIN
			O/H	OVERHEAD
			LB	POUNDS
			PSI	POUNDS PER SQUARE INCH
			RD	ROOF DRAIN
			SF	SQUARE FEET
			SIM.	SIMILAR
			T.D.H.	TOTAL DEVELOPED HEAD
			U/G	UNDERGROUND
			V.T.R.	VENT THROUGH ROOF
			W.C.	WATER COLUMN
			WHA	WATER HAMMER ARRESTOR

SLOPE OF PIPING SYSTEMS

- | | | |
|----|--------------------------|----------------------------|
| 1. | CONDENSATE DRAIN PIPING: | 1% UNLESS NOTED OTHERWISE. |
|----|--------------------------|----------------------------|

GENERAL NOTES

- THESE DRAWINGS ARE A GENERAL GRAPHIC PRESENTATION OF THE WORK, PIPING AND EQUIPMENT, AS SHOWN, ARE SCHEMATIC, FABRICATE AND INSTALL BASED ON ACTUAL FIELD MEASUREMENT. COORDINATE WITH OTHER TRADES. PROVIDE A COMPLETE SET OF SHOP DRAWINGS REFLECTING ACTUAL INSTALL, ACCESS REQUIREMENTS, AND DETAILS BASED UPON THE ACTUAL EQUIPMENT PROCURED. MAINTAIN AN UP TO DATE SET OF AS-BUILT DRAWINGS AT THE JOB SITE.
- THESE DRAWINGS ARE TO BE CONSIDERED NOT FOR CONSTRUCTION UNTIL THEY ARE STAMPED, SIGNED, AND PERMITTED. UNTIL THEN THEY ARE SUBJECT TO CHANGE WITHOUT NOTICE.
- COMPLY WITH CALIFORNIA MECHANICAL CODE (CMC), CALIFORNIA PLUMBING CODE (CPC), AND NATIONAL FIRE PROTECTION AGENCY (NFPA), AND GOVERNING CODES. THERE SHALL BE NO EXCEPTION. REPORT DEFICIENCIES WITHIN THIRTY (30) DAYS UPON AUTHORIZATION TO PROCEED.
- PROVIDE ACCESS AND CLEARANCE FOR MAINTENANCE FOR MECHANICAL & PLUMBING EQUIPMENT AND COMPONENTS AS RECOMMENDED BY THE EQUIPMENT MANUFACTURER AND APPLICABLE CODES.
- HANDLE, STORE AND INSTALL EQUIPMENT PER MANUFACTURERS INSTRUCTIONS.
- NO PLUMBING SHALL BE INSTALLED UNTIL ALL REQUIRED PLUMBING PLAN CHECK PERMITS AND APPROVALS HAVE BEEN OBTAINED FROM ALL REQUIRED AGENCIES.
- COORDINATE WITH THE ARCHITECTURAL DRAWINGS FOR EXACT LOCATION OF PLUMBING FIXTURES AND DRAINS.
- COORDINATE AND VERIFY SIZES, LOCATIONS, DEPTHS AND PRESSURIZED PIPING PRESSURES OF ALL BUILDING UTILITIES WITH CIVIL.
- COORDINATE AND SCHEDULE TIMING FOR UTILITY SERVICE CONNECTION.
- ALL LINES BELOW SLAB ON GRADE TO BE LOCATED AWAY FROM ALL LOAD BEARING FOOTINGS.
- ALL LINES RUNNING BELOW GRADE BEAMS OR PENETRATING, SEE STRUCTURAL DRAWINGS FOR CONSTRUCTION.
- ALL VENTS THRU ROOF SHALL BE MINIMUM OF 18 INCHES VERTICAL AND FIFTEEN FEET HORIZONTAL AWAY FROM ALL AIR CONDITIONING FRESH AIR INTAKES AND PROVIDED WITH VANDAL PROOF HOODS.
- CONTRACTOR SHALL BE RESPONSIBLE FOR ALL CUTTING AND PATCHING OF WALLS, ROOFS, FOOTINGS, FLOORS, INCLUDING ALL SAW CUTTING AND CORE DRILLING. COORDINATE ALL SAW CUTTING AND CORE DRILLING WITH STRUCTURALLY DRAWINGS. ANY CUTTING AND DRILLING REQUIRED OF STRUCTURAL ELEMENTS THAT IS NOT SPECIFICALLY SHOWN ON THE PLANS SHALL BE BROUGHT TO THE ARCHITECTS ATTENTION PRIOR TO CUTTING AND DRILLING. CONTRACTOR SHALL SUBMIT PROPOSED LOCATION AND SIZES OF SUCH CUTTING AND DRILLING FOR THE ARCHITECTS AND STRUCTURAL ENGINEERS APPROVAL.
- COORDINATE ALL EQUIPMENT LOCATIONS, PIPE PENETRATIONS AND EQUIPMENT PAD LOCATIONS WITH STRUCTURAL DRAWINGS PRIOR TO WORK.
- COORDINATE INSTALLATION OF ALL EQUIPMENT AND PIPING WITH OTHER TRADES PRIOR TO INSTALLATION. ENSURE THAT ALL CONTROL DEVICES, SHUT-OFF VALVES, ETC. ARE ACCESSIBLE FOR MAINTENANCE. WHERE ACCESS PANELS IN FINISHED SPACES, OTHER THAN THAT SHOWN, CONTRACTOR SHALL PROVIDE AND COORDINATE EXACT LOCATION OF PANELS WITH ARCHITECT PRIOR TO INSTALLATION.
- INSTALL VALVES WITH UNIONS OR FLANGES AT EACH PIECE OF EQUIPMENT ARRANGED TO ALLOW SERVICE, MAINTENANCE, AND EQUIPMENT REMOVAL WITHOUT SYSTEM SHUT-DOWN.
- ANY STRUCTURAL FIREPROOFING DAMAGED DURING INSTALLATION OF PLUMBING EQUIPMENT, PIPING, ETC. SHALL BE REPAIRED AT NO COST TO THE OWNER. REPAIRS SHALL BE AS DIRECTED BY THE ARCHITECT.
- CROSS CONNECTION PROTECTION SHALL BE PROVIDED AT ALL POTABLE WATER SUPPLIED APPLIANCES AND EQUIPMENT.
- COORDINATE WITH ELECTRICAL AND CONTROL CONTRACTORS FOR ALL POWER REQUIREMENTS PRIOR TO BID.
- COORDINATE WITH ELECTRICAL AND CONTROL CONTRACTORS FOR ALL POWER REQUIREMENTS PRIOR TO ORDERING ANY EQUIPMENT.
- UPON INSTALLATION OF ALL EQUIPMENT, DEVICES, VIBRATION ISOLATION, ETC., PROVIDE WRITTEN CONFIRMATION BY EQUIPMENT MANUFACTURER'S REPRESENTATIVES TO ENSURE COMPLIANCE WITH MANUFACTURER'S REQUIREMENTS.
- PROVIDE DETAILS AND SEISMIC CALCULATIONS FOR ALL EQUIPMENT ON VIBRATION ISOLATION. ALL DETAILS SHALL BE STAMPED BY A STRUCTURAL ENGINEER FROM VIBRATION ISOLATIONS MANUFACTURER.
- FOR EACH SUBMITTAL, THE CONTRACTOR SHALL PROVIDE A LETTER (ON COMPANY LETTERHEAD) AND SIGNED BY THE PROJECT MANAGER INDICATING THE SUBMITTAL HAS BEEN FULLY IN HOUSE REVIEWED TO ENSURE FULL COMPLIANCE WITH THE CONTRACT DOCUMENTS AND COORDINATION WITH OTHER TRADES. ANY EXCEPTIONS TO THE CONTRACT DOCUMENTS SHALL BE CLEARLY INDICATED ON THIS LETTER. ANY DISCREPANCIES/EXCEPTIONS NOT IDENTIFIED IN WRITING SHALL BE CORRECTED AT THE SOLE EXPENSE OF THE CONTRACTOR AND AT NO EXPENSE TO THE OWNER AND ENGINEER.

PIPE MATERIALS

- | | |
|----|--|
| 1. | CONDENSATE PIPING: COPPER TYPE "M" HARD DRAWN WITH WROUGHT COPPER SOLDERED |
|----|--|



©SGPA 2024

PREPARED FOR THE
BOARD OF EDUCATION
NATIONAL SCHOOL DISTRICT
NATIONAL CITY, CALIFORNIA

PREPARED BY
SGPA ARCHITECTURE
AND PLANNING

PLUMBING LEGEND AND GENERAL NOTES

**CENTRAL
WAREHOUSE**
FREEZER REPLACEMENT
1400 N AVENUE
NATIONAL CITY, CA 91950

SUBMITTALS / REVISIONS

#	ISSUE	DATE
1	DSA SUBMITTAL V1	03/19/2025
2	DSA BACKCHECK	04/30/2025

**BID SET 5/1/2025
NOT FOR
CONSTRUCTION
PROJECT STILL IN
REVIEW**

PROJECT NO. 22439-E-02

SHEET NO.

P-001